

NFPA 285 DETAIL NOTES:  
 ALL DETAILS TO BE REVIEWED BY A DESIGN PROFESSIONAL  
 PRIOR TO USE.  
 DETAIL IS INTENDED TO PROVIDE NFPA 285 GUIDANCE FOR  
 INSULATION INSTALLATION AND WINDOW DETAIL ONLY.  
 REFER TO TER 1306-03 FOR A LIST OF ACCEPTABLE NFPA 285  
 COMPLIANT COMPONENTS.  
 FLASH WINDOW & DOOR OPENINGS PER WRB  
 MANUFACTURER'S GUIDELINES

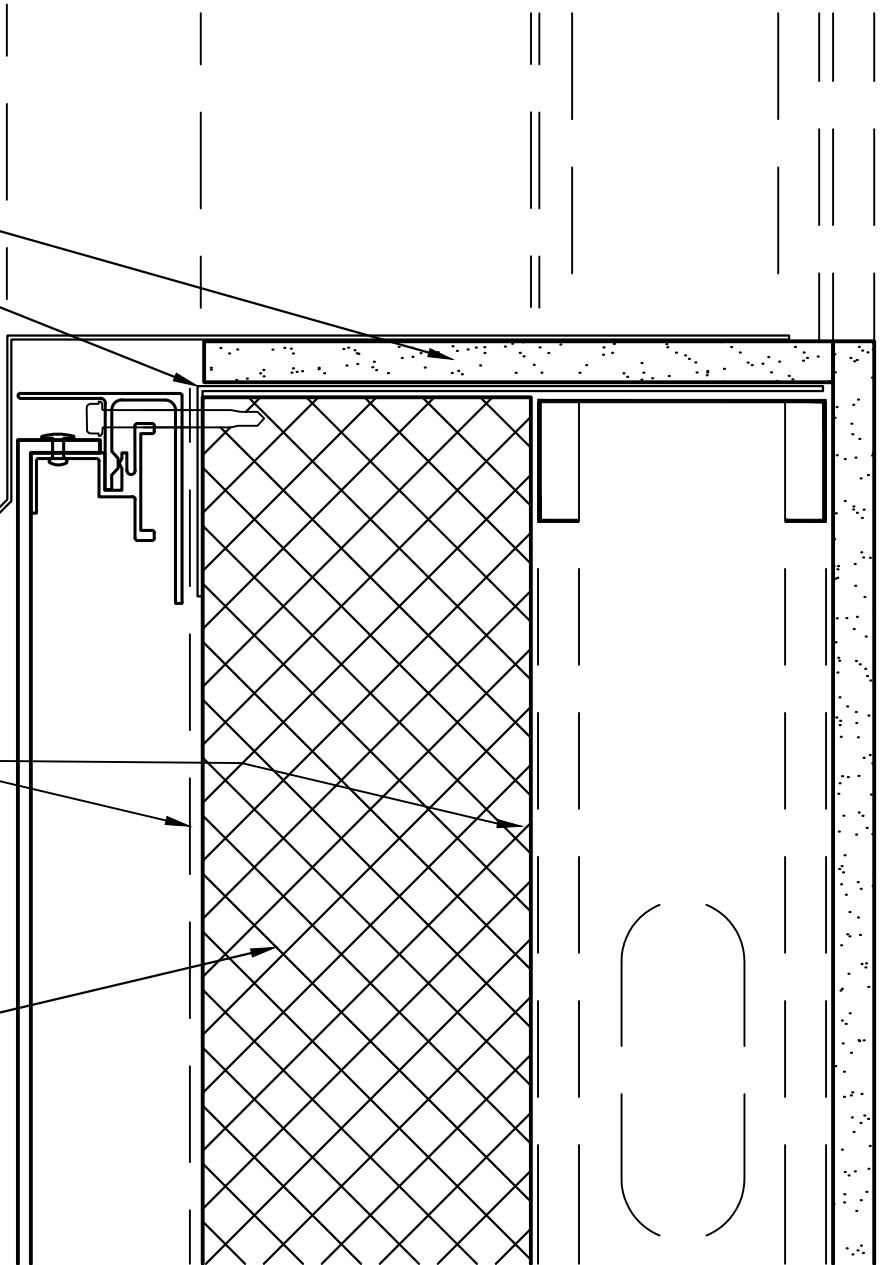
5/8" GYPSUM (TYPICAL)

2 1/2" X 10" X 16GA L ANGLE  
 CONTINUOUS AROUND OPENING

MIN. 0.04" ALUMINUM FLASHING

ONE OF MANY APPROVED WRB'S  
 SEE TER 1306-03  
 LOCATION OPTIONAL;  
 ONE NECESSARY BUT NOT BOTH

ENERGYSHIELD PRO/PRO2 (4.0" MAX)  
 ENERGYSHIELD CGF PRO (4.0" MAX)  
 ENERGYSHIELD PLY PRO (4.7" MAX)



**STEEL FRAMED - MCM - NON-GYP.**



**WINDOW SILL**  
**NFPA 285 COMPLIANT**

DATE / REVISION  
**08/09/17**  
 NOT TO SCALE

DETAIL NO.  
**ESP.NG.WS.A.01**