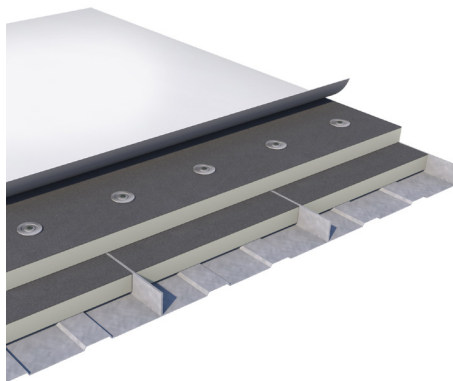


Bevel Cut ACFoam<sup>®</sup> in metal roofing retro fit application



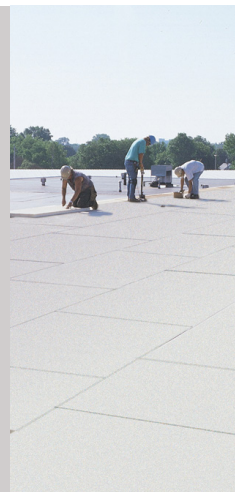
Square Cut ACFoam<sup>®</sup> in metal roofing retro fit application

## Introducing custom fabricated square and bevel cut polyiso roof insulation.

- Fabricated from thermally efficient closed-cell ACFoam<sup>®</sup>
- Perfect for flute filler in metal roofing retro fit systems
- Use as void filler to meet polyiso span ability requirements in all roofing applications

### Why ACFoam<sup>®</sup> Square or Bevel Cut

- Manufactured from <sup>1</sup>ACFoam<sup>®</sup>-II, <sup>2</sup>ACFoam<sup>®</sup>-III or <sup>3</sup>ACFoam<sup>®</sup> Supreme Polyiso Roof Insulation
- Refer to individual product data sheets for polyiso physical property, thermal performance and code compliance data.*
- Highest R-value per inch of thickness
- Excellent dimensional stability
- Superior performance in fire tests
- Fabricated in a controlled manufacturing facility
- Reduced job site waste and installation time
- Custom cut from 1.0"-4.0" ACFoam<sup>®</sup>, providing long-term thermal resistance (<sup>4</sup>LTR) values from 4.3 to 23.6.
- Available in 4' or 8' lengths up to 48" wide
- Available in all US and CAN markets



## ACFoam<sup>®</sup> Square and Bevel Cut That's Custom Cut for Your Specific Job.

#### ACFoam<sup>®</sup> Square and Bevel Cut ISO ASTM Classifications:

**1**-Glass Reinforced Felt (GRF): ASTM C1289 Type II, Class 1, Grade 2 (20 psi) or Grade 3 (25 psi) | **2**-Coated Glass Facer (CGF): ASTM C1289 Type II, Class 2, Grade 2 (20 psi) or Grade 3 (25 psi) | **3**-Reflective Foil Facer (Foil): ASTM C1289 Type I, Class 1, Grade 2 (20 psi) or Grade 3 (25 psi)  
**4**-LTR (long term thermal resistance) values were determined in accordance with CAN/ULC-S770-09. Test samples were third-party selected and tested by an accredited material testing laboratory. The LTR results were reviewed by FM Global and certified by the PIMA Quality Mark Program. \*To minimize the effects of thermal bridging, Atlas strongly recommends the use of multiple layers when the total desired or specified R-value requires an insulation thickness greater than 2.7" thick. Visit [atlasroofing.com](http://atlasroofing.com) for an extended list of product thicknesses.