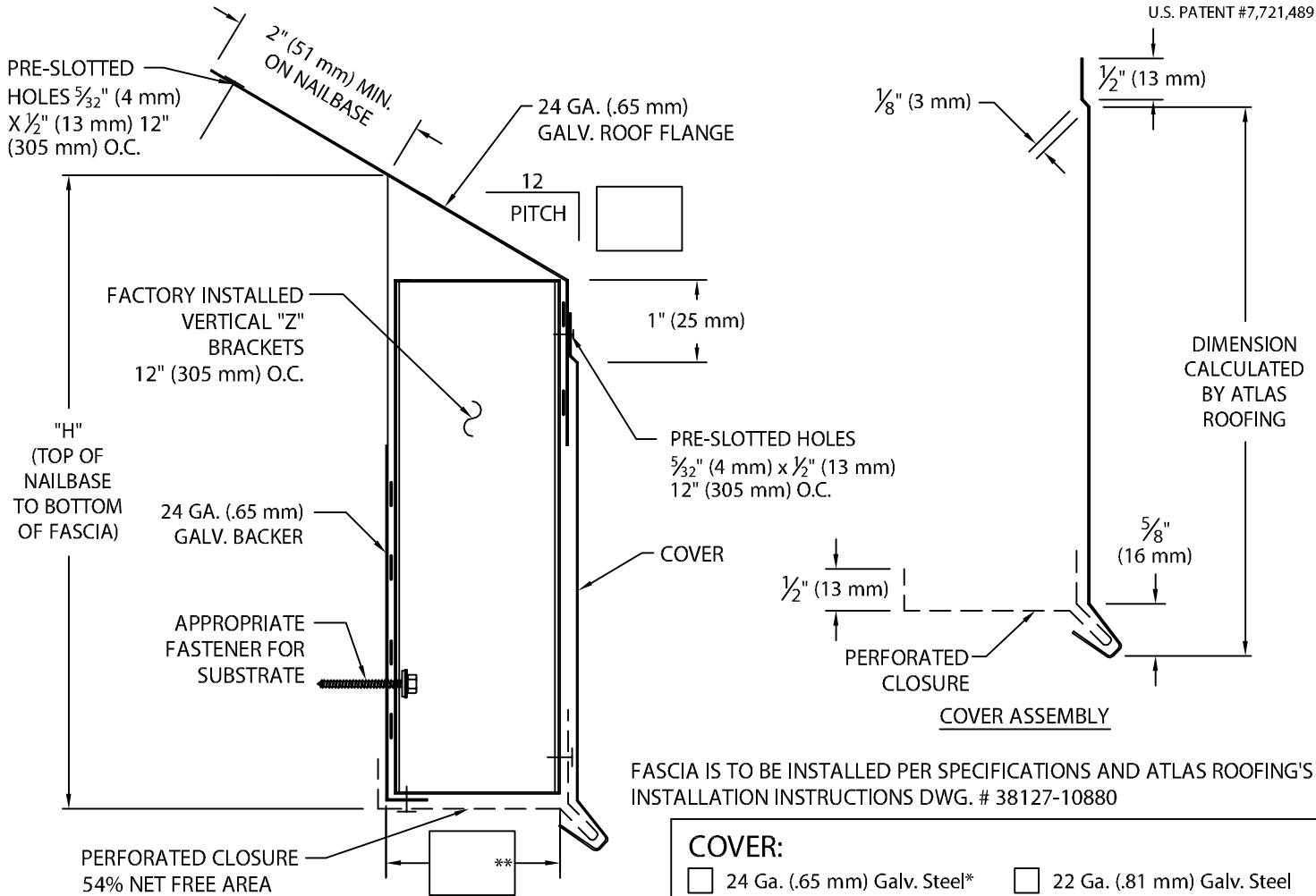


U.S. PATENT #7,721,489



FASCIA IS TO BE INSTALLED PER SPECIFICATIONS AND ATLAS ROOFING'S INSTALLATION INSTRUCTIONS DWG. # 38127-10880

NOTES: ALL FASTENERS BY OTHERS (SEE INSTALLATION INSTRUCTIONS FOR RECOMMENDATIONS)
 PERFORATED CLOSURE AND COVER SHIPPED LOOSE
 **RECOMMEND TWICE THE AIR SPACE - CONSULT ATLAS ROOFING
 TECHNI-FLO EV IS NOT INTENDED FOR ATTACHMENT TO OPEN ENDED METAL TRUSS OR METAL BAR JOIST APPLICATIONS.

COVER:

- 24 Ga. (.65 mm) Galv. Steel*
- .040" (1.01 mm) Aluminum*
- .063" (1.60 mm) Aluminum
- 22 Ga. (.81 mm) Galv. Steel
- .050" (1.27 mm) Aluminum
- Other _____

* Coverages Over 10" (254 mm) Include 1/8" (3 mm) Stiffening Band (See Dwg #38527-10879 For a Reference)

Color: _____ Finish: _____

PERFORATED CLOSURE:

- 24 Ga. (.65 mm) Galv. Steel Bone White
- 24 Ga. (.65 mm) Galv. Steel Dark Bronze
- 24 Ga. (.65 mm) Galv. Steel Sandstone
- 24 Ga. (.65 mm) Galv. Steel Slate Gray

QUANTITIES:

_____ Lineal Feet (12'-0" (3.65 m) Lengths)

_____ Eave to Eave Miters

_____ Outside @ (_____)°

_____ Inside @ (_____)°

_____ Eave to Rake Miters

SEE ADDITIONAL PRINT APPROVAL FOR RAKE CONDITION

"H" DIMENSION:

- 6" (152 mm) Coverage
- 8" (203 mm) Coverage
- 10" (254 mm) Coverage
- 12" (305 mm) Coverage*
- 14" (357 mm) Coverage*
- 16" (406 mm) Coverage*
- Other*: _____

Fabrication will proceed only after receipt of signed print approval.

Print Approval:

Architect and/or contractor shall verify all dimensions, sizes and quantities. All products to be installed in strict accordance with Atlas Roofing's printed instructions.

Approved by: _____

Date: _____

PROJECT:

ARCHITECT:

CONTRACTOR:

REPRESENTATIVE:



Phone: 855-542-0918
 Fax: 800-770-3934
 roof.atlasroofing.com

DATE: 04/12/12

DRN BY: JJC

CKD BY: SAK

SHT.# _____ OF _____

DWG# 38027-10878

E