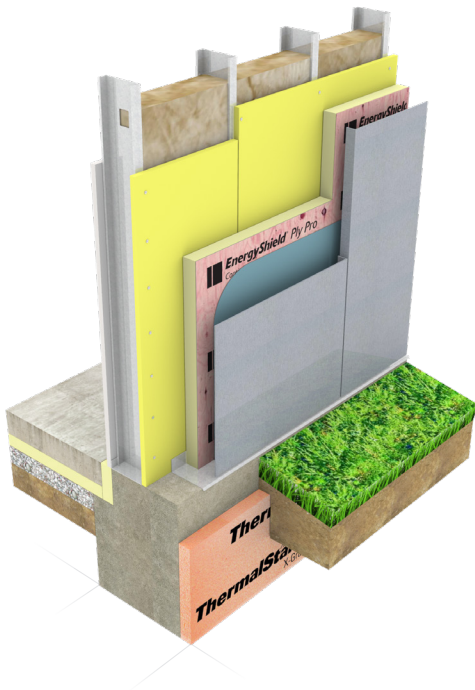


EnergyShield® Ply Pro

Continuous Wall Insulation

Trust isn't
bought.
It's built.



Introducing a Class A, NFPA 285 compliant, polyiso bonded to FRT plywood for commercial CI wall systems.

- Easy to incorporate into commercial wall design
- High R-value for a higher performance building envelope
- Approved for use in numerous NFPA 285 compliant assemblies

Why EnergyShield Ply Pro

Efficient: Our high performance Class A rated polyiso is extremely energy efficient, with the highest R-value per inch of any rigid insulation.

Convenient: There's no need for a separate insulation layer and an attachment layer. EnergyShield Ply Pro bonds these two layers together into one convenient panel.

Quick & Easy: The thermal insulation and attachment layer all in one system allows for faster installations and labor savings.

Proven: EnergyShield Ply Pro coated glass facer technology is proven with over 25 years of use as a facer in commercial walls.

Room to Grow: A thinner wall cavity with polyiso high R-value manufactured to provide a tight CI layer with an attachment layer gapped for expansion.

Versatile: The fire treated plywood panel, a nailable surface, allows for mechanical attachments of various cladding systems.

Provides an all-in-one nailable surface for various cladding attachments.

The configuration of weather resistive barriers and/or air barriers used in conjunction with EnergyShield Ply Pro is the responsibility of the designer. Consult the product manufacturer for specific compatibility.

2000 RiverEdge Parkway, Suite 800, Atlanta, Georgia 30328

wall.atlasrwi.com