



# NFPA 285 DETAIL DRAWINGS



NFPA 285 DETAIL NOTES:  
 ALL DETAILS TO BE REVIEWED BY A DESIGN PROFESSIONAL  
 PRIOR TO USE.  
 DETAIL IS INTENDED TO PROVIDE NFPA 285 GUIDANCE FOR  
 INSULATION INSTALLATION AND WINDOW DETAIL ONLY.  
 REFER TO TER 1306-03 FOR A LIST OF ACCEPTABLE NFPA 285  
 COMPLIANT COMPONENTS.  
 FLASH WINDOW & DOOR OPENINGS PER WRB  
 MANUFACTURER'S GUIDELINES

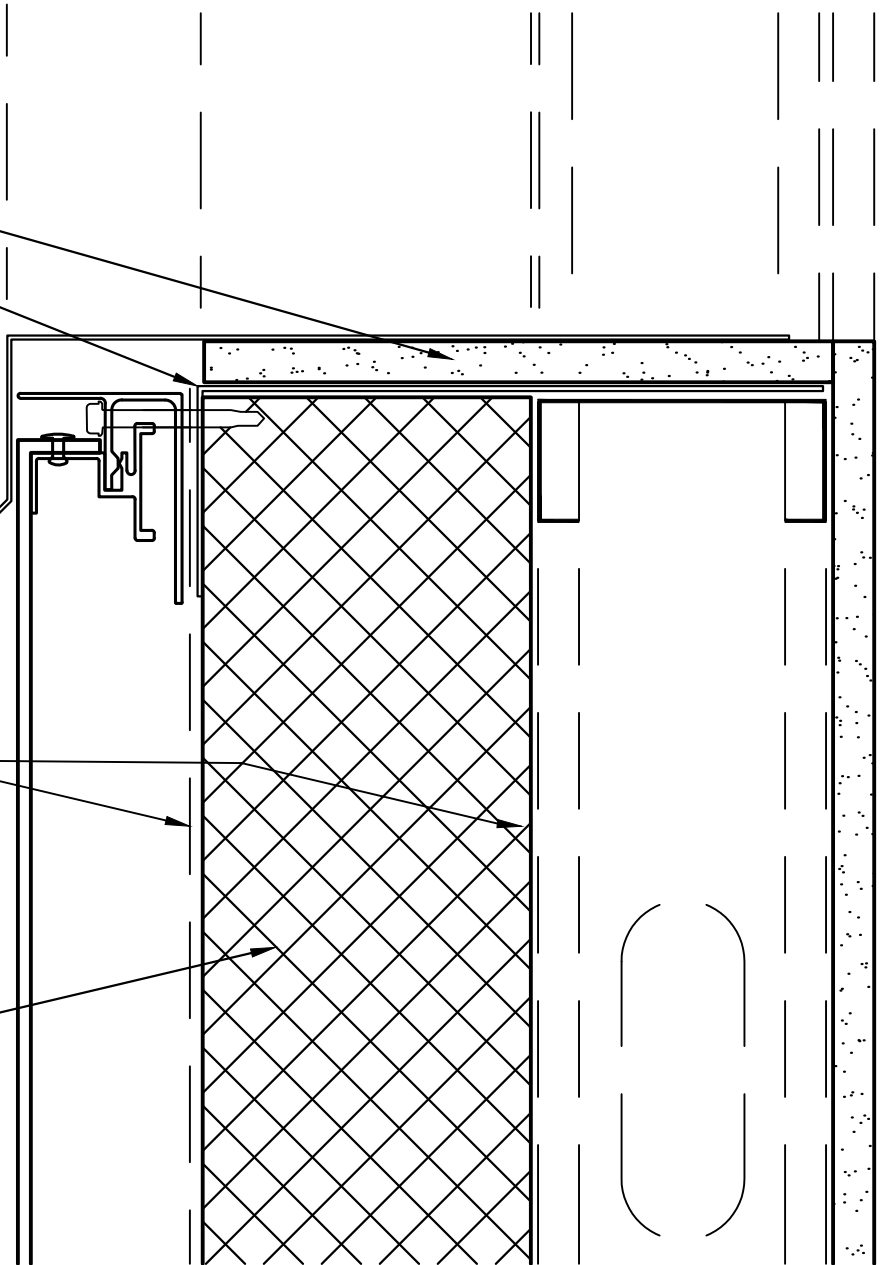
5/8" GYPSUM (TYPICAL)


2 1/2" X 10" X 16GA L ANGLE  
 CONTINUOUS AROUND OPENING

MIN. 0.04" ALUMINUM FLASHING

ONE OF MANY APPROVED WRB'S  
 SEE TER 1306-03  
 LOCATION OPTIONAL;  
 ONE NECESSARY BUT NOT BOTH

ENERGYSHIELD PRO/PRO2 (4.0" MAX)  
 ENERGYSHIELD CGF PRO (4.0" MAX)  
 ENERGYSHIELD PLY PRO (4.7" MAX)



	<b>STEEL FRAMED - MCM - NON-GYP.</b>		
	<b>WINDOW SILL</b>	DATE / REVISION <b>08/09/17</b>	DETAIL NO. <b>ESP.NG.WS.A.01</b>
	<b>NFPA 285 COMPLIANT</b>	NOT TO SCALE	

NFPA 285 DETAIL NOTES:  
 ALL DETAILS TO BE REVIEWED BY A DESIGN PROFESSIONAL  
 PRIOR TO USE.  
 DETAIL IS INTENDED TO PROVIDE NFPA 285 GUIDANCE FOR  
 INSULATION INSTALLATION AND WINDOW DETAIL ONLY.  
 REFER TO TER 1306-03 FOR A LIST OF ACCEPTABLE NFPA 285  
 COMPLIANT COMPONENTS.  
 FLASH WINDOW & DOOR OPENINGS PER WRB  
 MANUFACTURER'S GUIDELINES

MIN. 0.04" ALUMINUM HEADER FLASHING

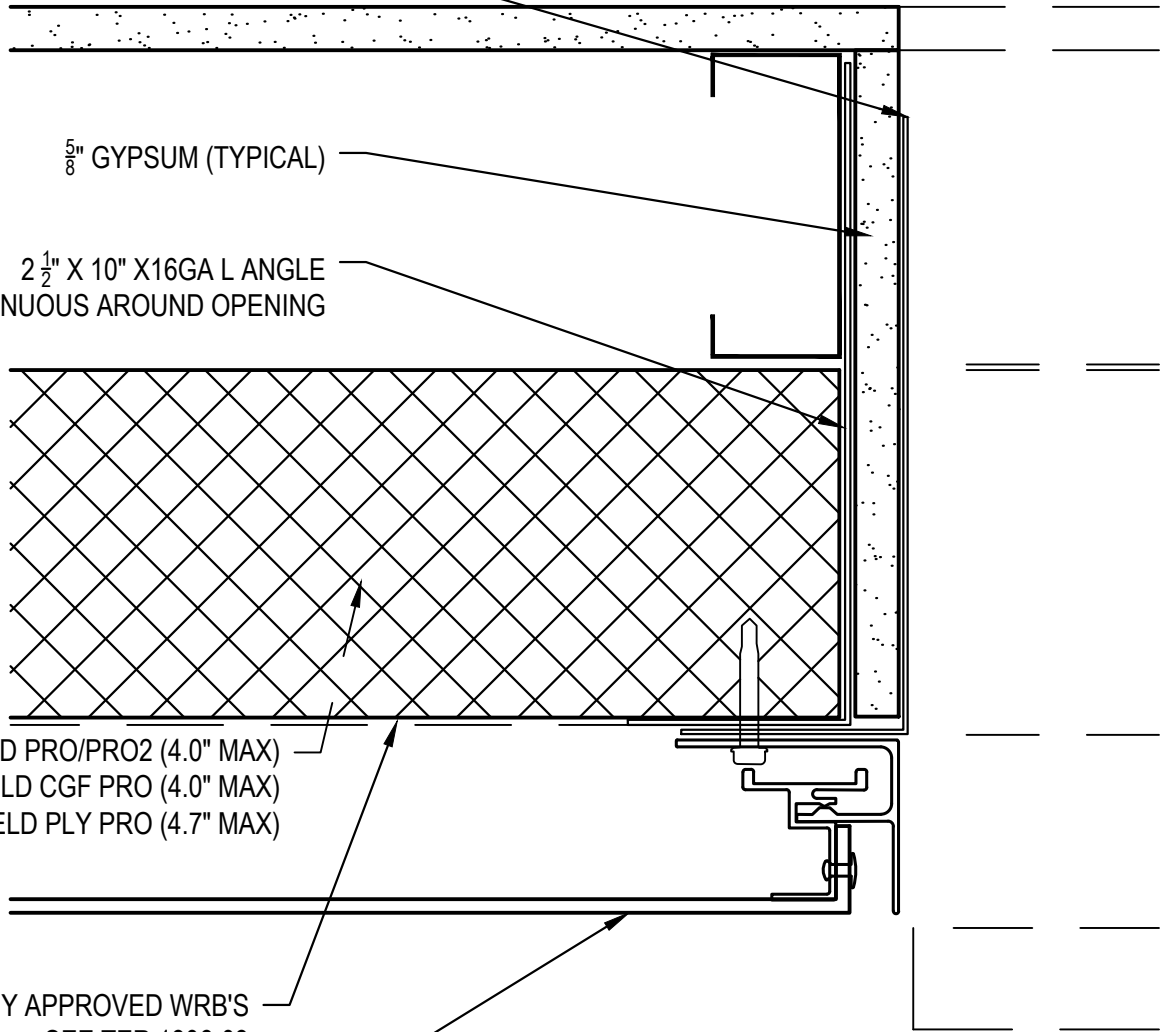
$\frac{5}{8}$ " GYPSUM (TYPICAL)

$2\frac{1}{2}$ " X 10" X16GA L ANGLE  
 CONTINUOUS AROUND OPENING

ENERGYSHIELD PRO/PRO2 (4.0" MAX)  
 ENERGYSHIELD CGF PRO (4.0" MAX)  
 ENERGYSHIELD PLY PRO (4.7" MAX)

ONE OF MANY APPROVED WRB'S  
 SEE TER 1306-03

ACM / MCM METAL PANEL



**STEEL FRAMED - MCM - NON-GYP.**



**WINDOW JAMB**  
**NFPA 285 COMPLIANT**

DATE / REVISION  
**08/09/17**  
 NOT TO SCALE

DETAIL NO.  
**ESP.NG.WJ.A.01**

NFPA 285 DETAIL NOTES:  
 ALL DETAILS TO BE REVIEWED BY A DESIGN PROFESSIONAL  
 PRIOR TO USE.  
 DETAIL IS INTENDED TO PROVIDE NFPA 285 GUIDANCE FOR  
 INSULATION INSTALLATION AND WINDOW DETAIL ONLY.  
 REFER TO TER 1306-03 FOR A LIST OF ACCEPTABLE NFPA 285  
 COMPLIANT COMPONENTS.  
 FLASH WINDOW & DOOR OPENINGS PER WRB  
 MANUFACTURER'S GUIDELINES

ACM / MCM METAL PANEL  
 ENERGYSHIELD PRO/PRO2 (4.0" MAX)  
 ENERGYSHIELD CGF PRO (4.0" MAX)  
 ENERGYSHIELD PLY PRO (4.7" MAX)

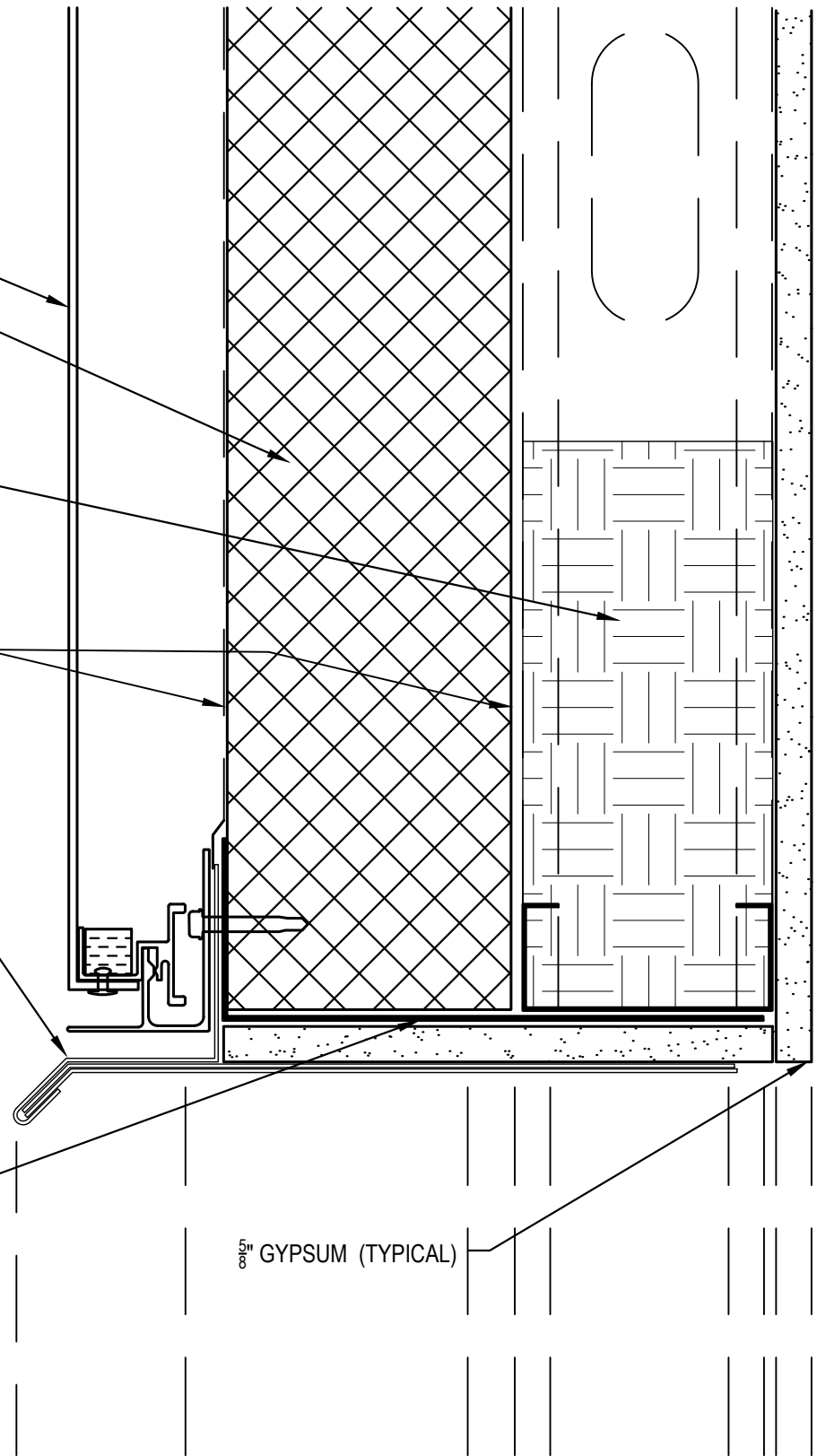
8" MINERAL FIBER INSULATION IN STUD  
 CAVITY OVER WINDOW OPENING


ONE OF MANY APPROVED WRB'S  
 SEE TER 1306-03  
 LOCATION OPTIONAL;  
 ONE NECESSARY BUT NOT BOTH

2 PIECE, 0.04" ALUMINUM HEADER  
 FLASHING WITH 24 GA STAINLESS  
 STEEL LINER

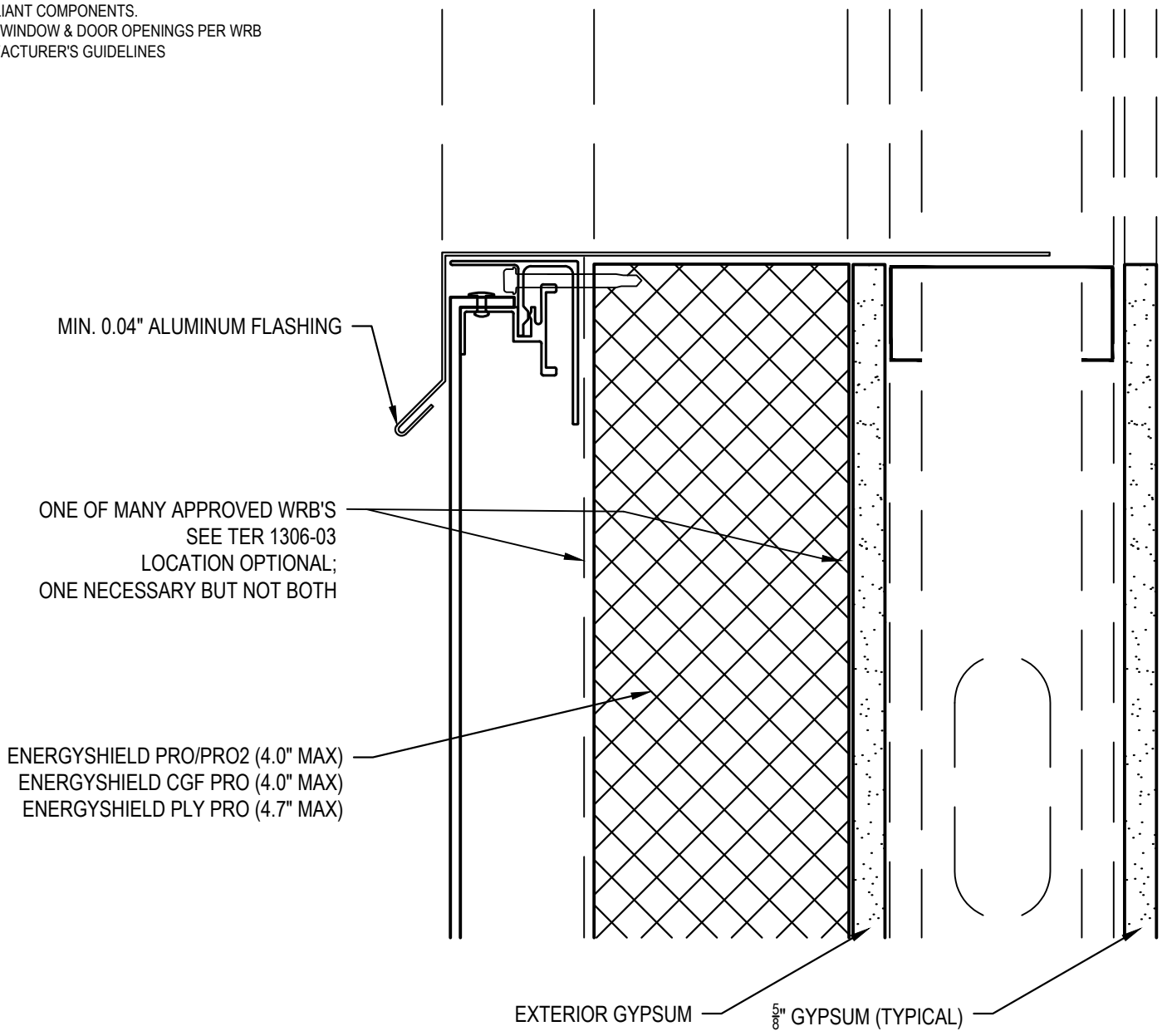
2 1/2" X 10" X 16GA L ANGLE-  
 CONTINUOUS AROUND OPENING


5/8" GYPSUM (TYPICAL)



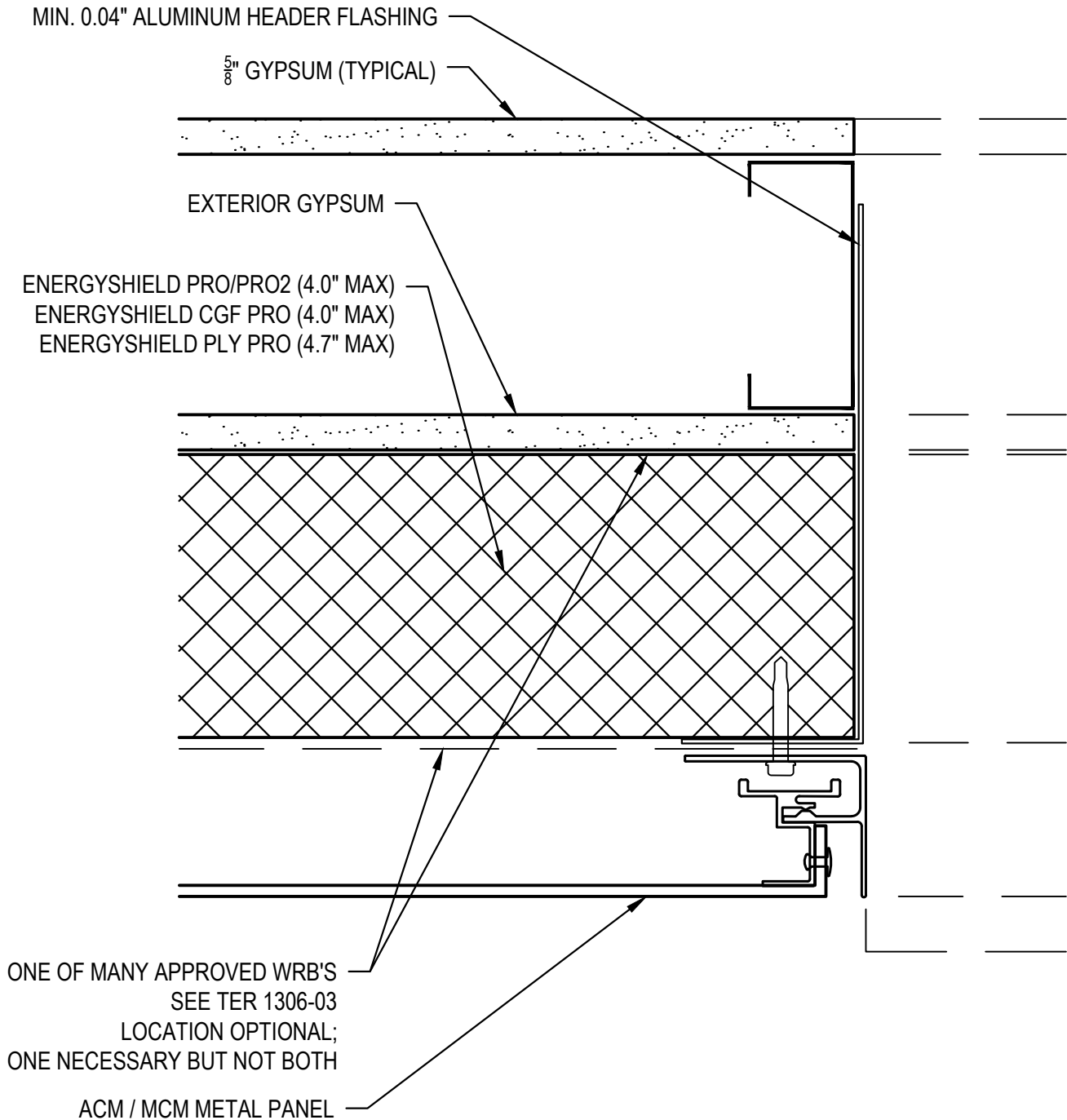
 <b>EnergyShield</b> <sup>®</sup> <i>Continuous Wall Insulation</i>	<b>STEEL FRAMED - MCM - NON-GYP.</b>		
	<b>WINDOW HEADER</b>	DATE / REVISION <b>08/09/17</b>	DETAIL NO. <b>ESP.NG.WH.A.01</b>
	<b>NFPA 285 COMPLIANT</b>	NOT TO SCALE	

NFPA 285 DETAIL NOTES:  
 ALL DETAILS TO BE REVIEWED BY A DESIGN PROFESSIONAL  
 PRIOR TO USE.  
 DETAIL IS INTENDED TO PROVIDE NFPA 285 GUIDANCE FOR  
 INSULATION INSTALLATION AND WINDOW DETAIL ONLY.  
 REFER TO TER 1306-03 FOR A LIST OF ACCEPTABLE NFPA 285  
 COMPLIANT COMPONENTS.  
 FLASH WINDOW & DOOR OPENINGS PER WRB  
 MANUFACTURER'S GUIDELINES



 <b>EnergyShield</b> <sup>®</sup> <i>Continuous Wall Insulation</i>	<b>STEEL FRAMED - MCM - GYP.</b>		
	<b>WINDOW SILL</b>	DATE / REVISION <b>08/09/17</b>	DETAIL NO. <b>ESP.G.WS.A.01</b>
	<b>NFPA 285 COMPLIANT</b>	NOT TO SCALE	

NFPA 285 DETAIL NOTES:  
 ALL DETAILS TO BE REVIEWED BY A DESIGN PROFESSIONAL  
 PRIOR TO USE.  
 DETAIL IS INTENDED TO PROVIDE NFPA 285 GUIDANCE FOR  
 INSULATION INSTALLATION AND WINDOW DETAIL ONLY.  
 REFER TO TER 1306-03 FOR A LIST OF ACCEPTABLE NFPA 285  
 COMPLIANT COMPONENTS.  
 FLASH WINDOW & DOOR OPENINGS PER WRB  
 MANUFACTURER'S GUIDELINES



**STEEL FRAMED - MCM - GYP.**



**WINDOW JAMB**

**NFPA 285 COMPLIANT**

DATE / REVISION

08/09/17

NOT TO SCALE

DETAIL NO.

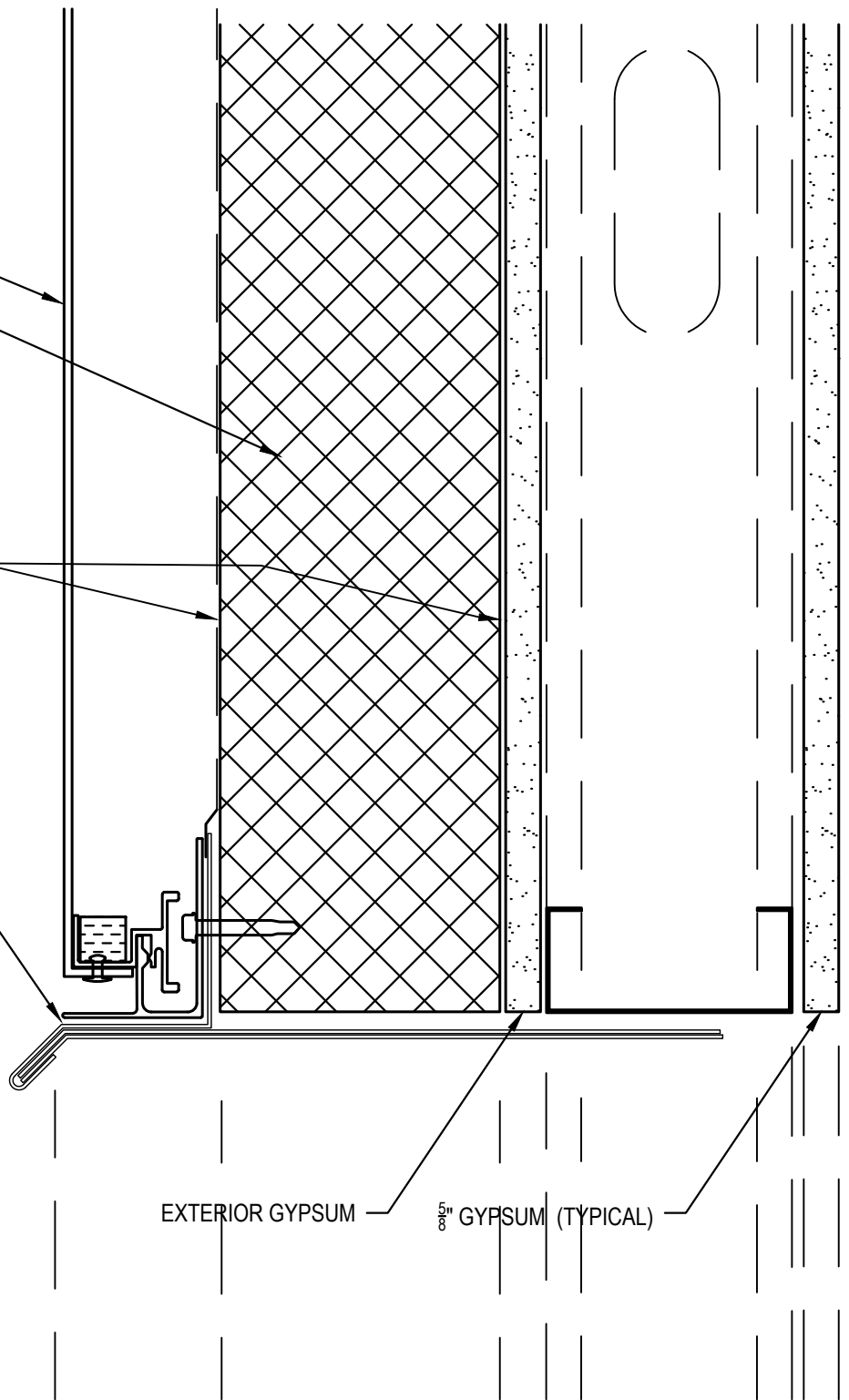
ESP.G.WJ.A.01

NFPA 285 DETAIL NOTES:  
 ALL DETAILS TO BE REVIEWED BY A DESIGN PROFESSIONAL  
 PRIOR TO USE.  
 DETAIL IS INTENDED TO PROVIDE NFPA 285 GUIDANCE FOR  
 INSULATION INSTALLATION AND WINDOW DETAIL ONLY.  
 REFER TO TER 1306-03 FOR A LIST OF ACCEPTABLE NFPA 285  
 COMPLIANT COMPONENTS.  
 FLASH WINDOW & DOOR OPENINGS PER WRB  
 MANUFACTURER'S GUIDELINES

ACM / MCM METAL PANEL  
 ENERGYSHIELD PRO/PRO2 (4.0" MAX)  
 ENERGYSHIELD CGF PRO (4.0" MAX)  
 ENERGYSHIELD PLY PRO (4.7" MAX)

ONE OF MANY APPROVED WRB'S  
 SEE TER 1306-03  
 LOCATION OPTIONAL;  
 ONE NECESSARY BUT NOT BOTH

2 PIECE, 0.04" ALUMINUM  
 HEADER FLASHING



EXTERIOR GYPSUM      5/8" GYPSUM (TYPICAL)



## STEEL FRAMED - MCM - GYP.

WINDOW HEADER  
 NFPA 285 COMPLIANT

DATE / REVISION  
 08/09/17

NOT TO SCALE

DETAIL NO.  
 ESP.G.WH.A.01