

NFPA 285 DETAIL NOTES:
 ALL DETAILS TO BE REVIEWED BY A DESIGN PROFESSIONAL
 PRIOR TO USE.
 DETAIL IS INTENDED TO PROVIDE NFPA 285 GUIDANCE FOR
 INSULATION INSTALLATION AND WINDOW DETAIL ONLY.
 REFER TO TER 1306-03 FOR A LIST OF ACCEPTABLE NFPA 285
 COMPLIANT COMPONENTS.
 FLASH WINDOW & DOOR OPENINGS PER WRB
 MANUFACTURER'S GUIDELINES

ACM / MCM METAL PANEL
 ENERGYSHIELD PRO/PRO2 (4.0" MAX)
 ENERGYSHIELD CGF PRO (4.0" MAX)
 ENERGYSHIELD PLY PRO (4.7" MAX)

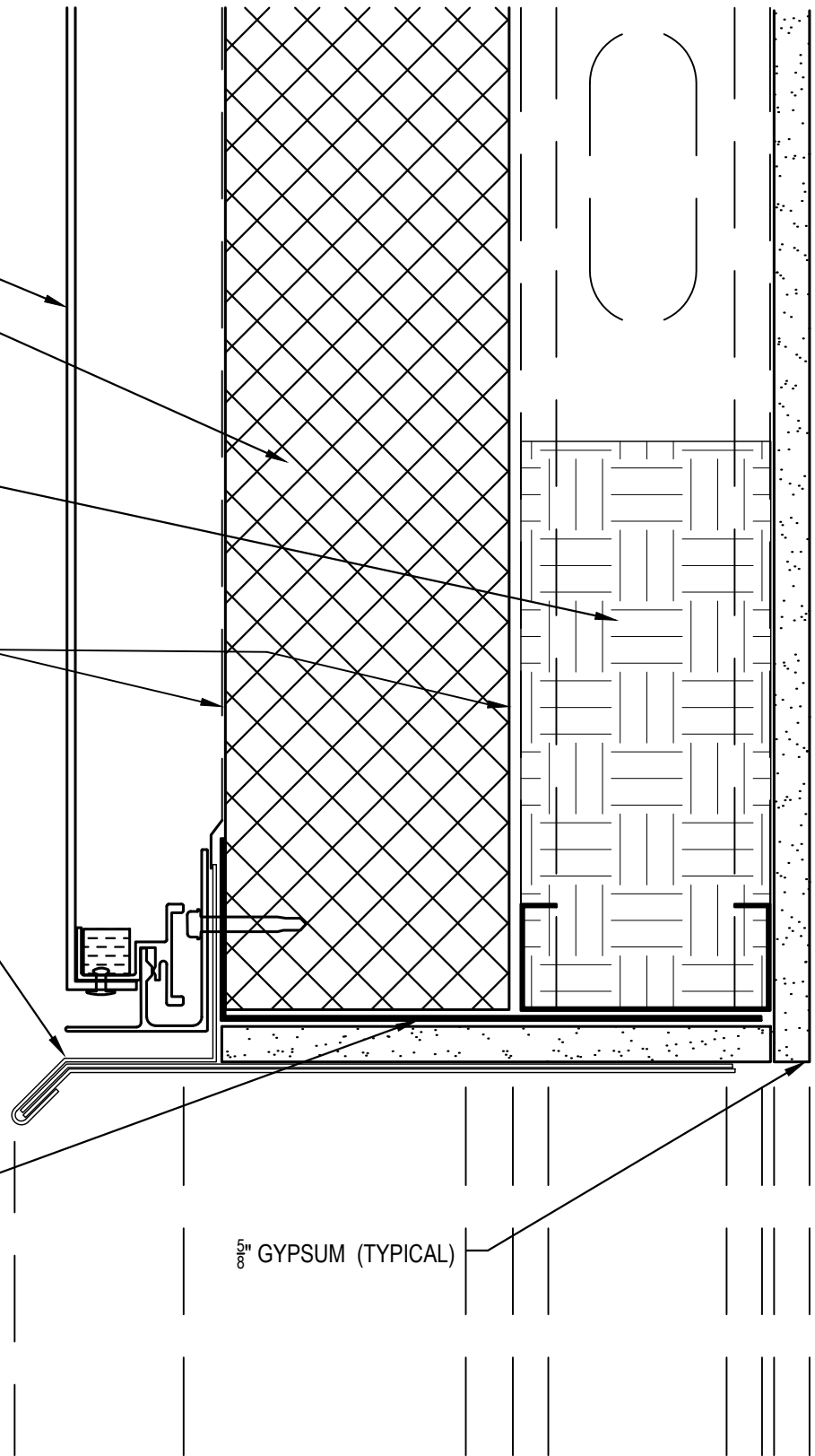
8" MINERAL FIBER INSULATION IN STUD
 CAVITY OVER WINDOW OPENING

ONE OF MANY APPROVED WRB'S
 SEE TER 1306-03
 LOCATION OPTIONAL;
 ONE NECESSARY BUT NOT BOTH

2 PIECE, 0.04" ALUMINUM HEADER
 FLASHING WITH 24 GA STAINLESS
 STEEL LINER

2 1/2" X 10" X 16GA L ANGLE-
 CONTINUOUS AROUND OPENING

5/8" GYPSUM (TYPICAL)



STEEL FRAMED - MCM - NON-GYP.



WINDOW HEADER

NFPA 285 COMPLIANT

DATE / REVISION

08/09/17

NOT TO SCALE

DETAIL NO.

ESP.NG.WH.A.01